

# Borehole Video Cameras

Geovista borehole video cameras offer high quality, flexible, and reliable performance. With high speed data transmission, user-controlled lens focusing, and industry leading optical and lighting technology, our cameras make borehole inspection easy.

Geovista borehole colour video cameras work on your wireline winch along with your geophysical logging probes. This means you don't need to purchase and mobilise a second winch just for the camera. The cameras offer high quality, flexible, and reliable performance to ensure you can see what is happening in your well; our camera systems are currently in use worldwide. Innovative designing allows for high speed data transmission, real time video and still photo capture, user controlled lens focusing, video compression, optical and lighting technology, CCD sensors and image processing. We offer two types of camera system:

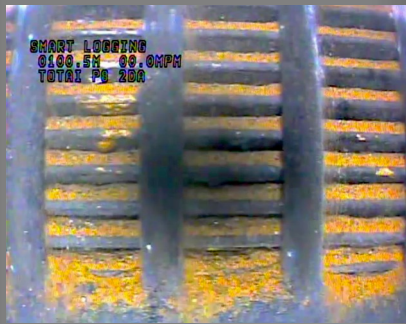
**Dual Camera:** The dual view camera provides both axial and 360° infinite rotating video with real time depth, speed, comments, title, software controllable functions (editing, zoom, BLC, camera control...), variable high and low intensity lighting, as well as focusing, and rotation speed control. An inclination and deviation sensor can be added to orientate your downhole video.

**Axial Camera:** Offers the convenience of a smaller diameter and a lower price. With a 0.01 lux sensitivity sensor and frontal light head, this camera is suitable for inspections in small diameter wells or wells with small entry restrictions.



## APPLICATIONS

- Wellbore inspection



SPECIFICATIONS	Dual View Colour Camera	Axial Colour Camera
Weight	9.5 kg	2.8 kg
Length	1.4 m	0.66 m
Diameter	62 mm	42 mm (54 mm HP version)
Image Sensor	1/4" CCD	1/3" CCD
Min Illumination	0.02 Lux	0.01 Lux
Lens Size	2.5 mm & 2.9 mm	2.6 mm
	Automatic iris	Automatic iris, fixed focus
	User controllable focus	
	Software controllable functions	
Max. Pressure	150 bar	80 bar (optional 150 bar)
Max. Temperature	70 °C	70 °C
Wireline cable limitations	Connects to your wireline winch like other downhole probes. Works on maximum 650 m 3/16 in coaxial cable Works on maximum 1500 m 1/4 in coaxial cable	
Combinability	Not combinable	Not combinable
Borehole	Clear water, air open, cased, PVC	Clear water, air open, cased, PVC
Centralisation	Recommended	Recommended
Accessories	Optional orientation sensor	