

Caliper Probes

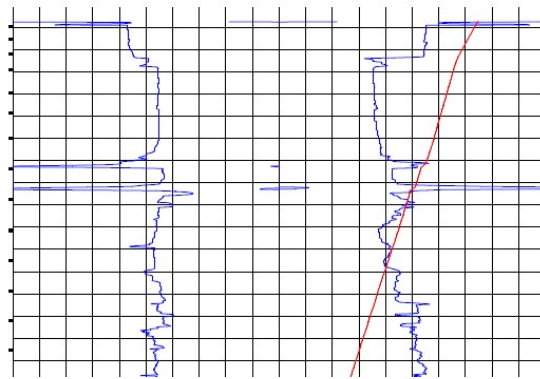
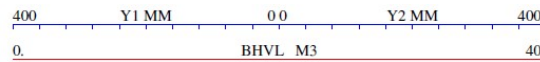
KEY FEATURES

- Combinable, digital probes
- Independent arms (2 and 4 arm)
- Extendable range (4-arm)

The Geovista range of borehole caliper probes provide a continuous log of the borehole diameter or radii. They use motorised, spring-loaded arms that follow the profile of the borehole wall as the sonde travels up hole.

Geovista calipers can be used on their own or in combination with other Geovista sondes. In addition to the traditional 3-arm caliper, a caliper with two independent arms is available. This can be coupled with a second 2-arm caliper sonde to provide a slim 4-independent arm caliper. Alternatively a single four-arm caliper with independent arms is available for larger boreholes, up to 1500 mm with arm extensions.

Independent caliper arms allow for the measurement of diameters (or radii), even when the sonde is not centred, thus avoiding the problem that is common to sondes with interlinked arms.



APPLICATIONS

- Borehole diameter changes
- Borehole condition and integrity
- Fractures
- Borehole volume calculation
- Log environmental corrections

SPECIFICATIONS

	2-Arm	3-Arm	4-Arm
Weight (kg)	9.8	8.5	18.0
Length (m)	1.32	1.45	1.18
Diameter (mm)	45	38	80
Range (mm)	50-400	45-600	85-1000 /1500
Independent arms	Yes	No	Yes
Arm extensions	No	No	Yes / 1500
Measurement	X1, X2 Radii <i>(can be combined to give a slim-4arm caliper with independent arms)</i>	Overall Diameter	X1,X2,Y1,Y2 Radii
Max. Pressure (MPa)	20 (HP version @ 35)	20 (HP version @ 35)	20 (HP version @ 35)
Max. Temp. (°C)	80 (HT version @ 125)	80 (HT version @ 125)	80 (HT version @ 125)
Accessories	Calibration Jig	Calibration Jig	Calibration Jig, Arm Extensions

