

GEOVISTA GR VERIFICATION BLANKET



Geovista supply two sizes of verification blankets. One for a 38mm probe (Natural Gamma probe) and one for a 60mm probe (Spectral Gamma probe). These blankets are useful for verification of the Gamma crystal.

GV SPECTRAL GAMMA VERIFICATION BLANKET (60MM)

The Spectral Gamma Verification Blanket allows the operator to confirm the spectral stability of the sonde. This can be done by verifying the position of one (^{208}Tl) or all of the three usually distinguishable peaks in the decay spectrum of Thorium, before and after a survey.

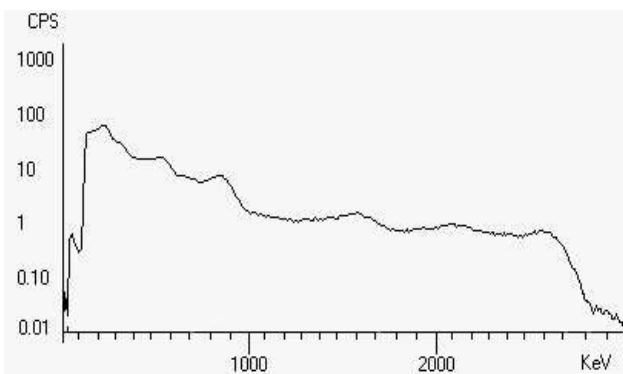


Fig. 1- Thorium decay spectrum with logarithmic vertical scale (cps)

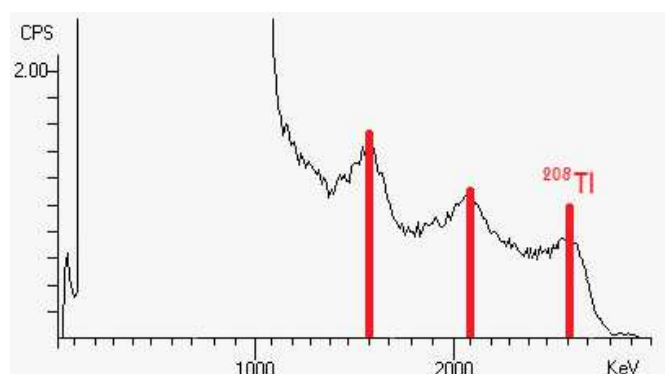


Fig. 2- Thorium decay spectrum with linear vertical scale (cps)

To check the sonde, roll the blanket around the sonde with the tag loop in line with the chamfered section at the bottom of the sonde (See below).



Sample the spectrum for about 2 minutes and verify that the position of selected peaks has not shifted. Save / print file as required.

GV NATURAL GAMMA VERIFICATION BLANKET (38MM)

A smaller 38mm blanket can be used with a Geovista natural gamma ray. Wrapping the blanket around the probe in the location of the crystal, the operator can detect the increase in gamma counts before and after a survey to confirm the crystal is responding to increases in Gamma counts.