

Magnetic Susceptibility Probe

Geovista MSUS Probe

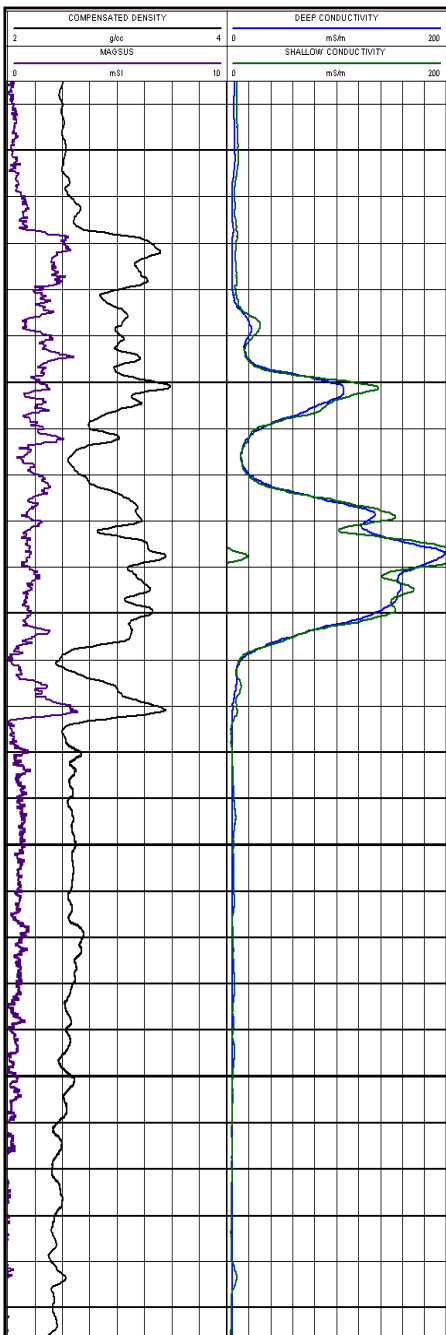
APPLICATIONS

- Mineral Identification & Characterisation
- Lithology & Ore Identification
- Geotechnical studies & Exploration
- Common for pyrite, magnetite & hematite

This is a two coil electromagnetic sonde designed to measure a wide range of apparent formation magnetic susceptibility.

OVERVIEW

The volume magnetic susceptibility (receptiveness) of a formation is a dimensionless value that indicates the degree of magnetization of the formation in response to an applied magnetic field by the sonde. The Magnetic Susceptibility sonde is mainly used for exploration for deposits of Fe minerals such as magnetite, pyrrhotite and haematite. It can identify formations containing magnetite from 0.005 to 100 % concentration.



SPECIFICATION

	MAGS
Weight	4.5 kg
Length	1.37 m
Diameter	45 mm
Range Options	10 ⁻⁵ to 2 SI units
Transmitter to Receiver spacing	30cm
Frequency	2 kHz
Max. Pressure	20 MPa
Max. Temperature	80°C
Combinability	Modular
Borehole	Water, mud, air filled
Centralisation	Not Required
Accessories	Test & Calibration Jig