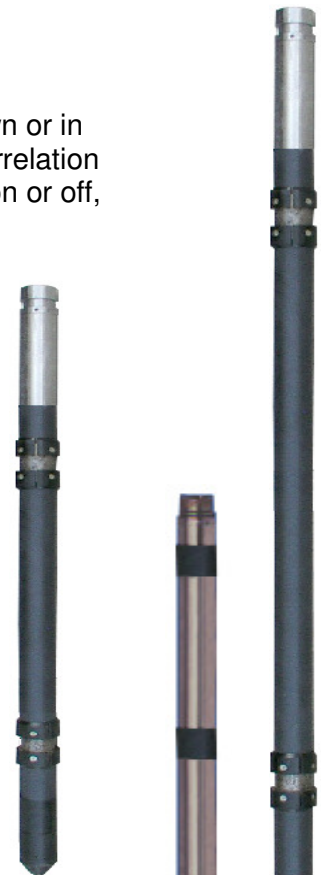


Normal Resistivity /SP/SPR Sonde

The Geovista digital Normal Resistivity Sonde can be used on its own or in combination with other Geovista sondes for efficient logging and correlation purposes. The SP can be recorded with the sonde either powered on or off, using the 16" electrode and a surface fish. A simplified **SP/SPR** sonde is also available, if required.

Specifications:

	ELOG Sonde	SP/SPR Sonde
Weight	8kg	3kg
Length	2.27m	0.7m
Diameter	42mm	42mm
64"N & 16"N Resistivity Range	1 to 10,000 Ohmm	N/A
SPR	1 to 10,000 Ohm	1 to 10,000 Ohm
SP Range	-2.5V to +2.5V	-2.5V to +2.5V
Current return	Cable armour	
Measure return	Bridle electrode	
Max. Pressure	20MPa	
Max. Temperature	80°C	



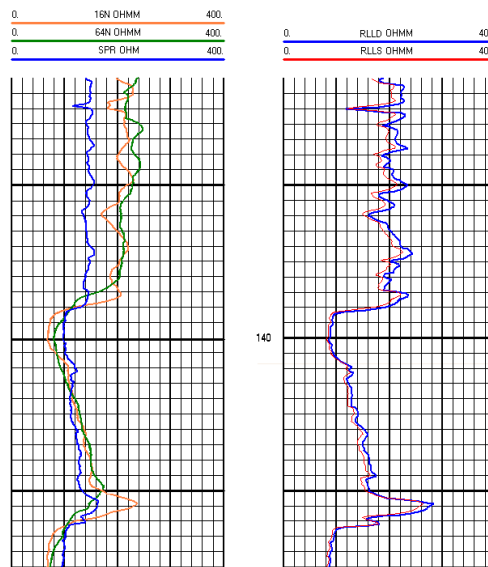
Dual Guard Focused Resistivity Sonde

Provides a Medium and a Deep LL3 focussed resistivity log with finer vertical resolution than the traditional Normal Resistivity sonde.

Performance is also better in higher conductivity mud and higher resistivity formations. This probe can be used on its own or in combination with other Geovista sondes.

Specifications:

Weight	8.0 kg
Length	2.37m
Diameter	42 mm
LLD & LLS Resistivity Range	0.2 to 30,000 Ohmm
SP Range	-2.5V to +2.5V
Max. Pressure	20MPa
Max. Temperature	80°C



Geovista reserve the right to change the products' list and specifications without prior notice