

Camera Systems

Borehole Video Inspection Colour Cameras

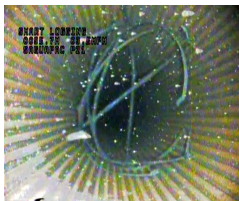
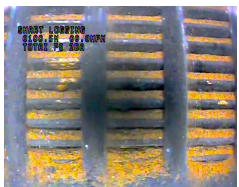
APPLICATIONS

- Well Inspection and verification

FEATURES

- Works on wireline cable
- Works on the same winch as your geophysical probes
- Axial and 360 deg infinite viewing
- Software controllable features
- Variable high & low intensity lighting
- Comments, title, editing, depth, speed
- Optional Orientation sensor
- Real time high quality video
- Colour on up to 1500m cable
- Axial B&W on up to 2000m cable

Note: A surface Camera Control Box (CCU) is required at surface to run the camera.



The Geovista borehole colour video cameras are designed to work on your wireline winch along with your geophysical logging probes so you don't need to purchase and mobilise a second winch just for the camera.

OVERVIEW

High quality, flexibility and reliability offer loggers and drillers alike a new dimension in inspecting wellbores. Geovista supply downhole cameras to allow you to see what is happening in your well. We have designed, manufactured and supplied cameras that have proven invaluable to users worldwide. Innovative systems allow for high speed data transmission, real time video and still photo capture, user controlled lens focusing, video compression, optical and lighting technology, CCD sensors and image processing.

Dual Camera: The dual view camera provides both axial and 360° infinite rotating video with real time depth, speed, comments, title, software controllable functions (editing, zoom, BLC, camera control...), variable high and low intensity lighting as well as focusing and rotation speed control. An optional inclination and deviation sensor can be added to orientate your downhole video.

Axial Camera: Offers the convenience of a smaller diameter and a lower price. With a 0.01 lux sensitivity sensor and frontal light head, this camera is suitable for inspections in small diameter wells or wells with small entry restrictions.

SPECIFICATION

	Dual View Colour Camera	Axial Colour Camera
Weight	9.5 kg	2.8 kg
Length	1.4 m	0.66 m
Diameter	62 mm	42 mm
Image Sensor	1/4" CCD	1/3" CCD
Min Illumination	0.02 Lux	0.01 Lux
Lens Size	2.5mm & 2.9mm	2.6mm
	Automatic Iris	Automatic Iris, Fixed focus
	User controllable focus	
	Software controllable functions	
Max. Pressure	150 Bar	200 Bar
Max. Temperature	70°C	70°C
Wireline cable limitations	Connects to your wireline winch like other downhole probes.	
	Works on maximum 650m 3/16in coaxial cable	
	Works on maximum 1500m 1/4in coaxial cable	
Combinability	Not combinable	Not combinable
Borehole	Clear Water, Air	Clear Water, Air
	Open, Cased, PVC	Open, Cased, PVC
Centralisation	Recommended	Recommended
Accessories	Optional Orientation Sensor	