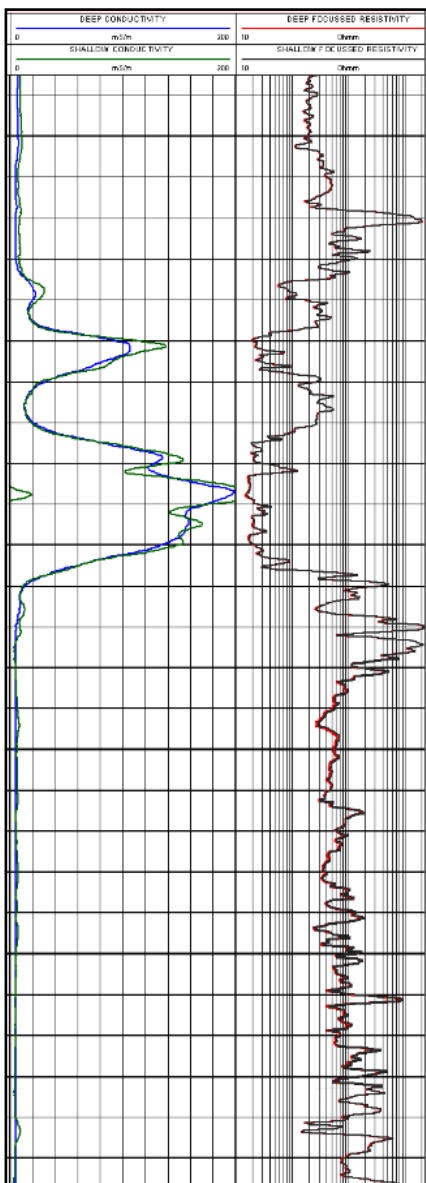


## EM Dual Induction Probe

### Geovista DILS Probe

#### APPLICATIONS

- Ore Body Identification
- Hydrocarbon and water salinity indication
- Permeable and Porosity zone indicator
- Correlation



The Geovista EM Dual Induction Probe provides formation conductivity logs in low conductivity mud, air-filled and plastic lined boreholes. Performance is best in higher conductivity formations. The Dual Induction configuration allows for a deep and medium penetration differentiating between invaded and uninvaded zones. Probes can be used on their own or in combination with other Geovista sondes

#### OVERVIEW

The Dual Induction Sonde has two receiver coils instead of one for a single induction. This extra coil allows two points to be plotted instead of one which helps more accurately determine formation features. The Induction Sonde works by transmitting a high frequency current through a coil and measures the induced electromagnetic field 180 degrees out of phase at the receiver.



#### SPECIFICATION

| DILS Sonde          |  |
|---------------------|--|
| Weight              | 5.0 kg   |
| Length              | 1.86 m   |
| Diameter            | 45 mm  |
| TX-RX Spacings      | 20" & 32"  |
| Operating Frequency | 100 kHz  |
| Conductivity Range  | 1 to 3000 mS/m<br>(0.33 to 1000 Ohmm)                            |
| Max. Pressure       | 20 MPa   |
| Max. Temperature    | 80°C   |
| HT version          | HT 125°C   |
| Combinability       | Modular  |
| Borehole            | Connect probes above<br>Water, Mud, Air<br>Open hole, PVC casing |
| Centralisation      | Not Required   |
| Accessories         | Conductivity test and calibration loop                           |